

TIDINGS

IRVING PARK LUTHERAN CHURCH
3938 W. BELLE PLAINE AVE. • CHICAGO, IL 60618-1997

Vol. 35, No. 1

January 2008



IPLC

Inviting in God's Name
Proclaiming the Gospel
Living in Fellowship
Caring for others

A FEW THOUGHTS FROM THE PASTOR

Epiphany (ĭ-pĭf'ə-nē)

1. (*initial capital letter*) a Christian festival, observed on January 6, commemorating the manifestation of Christ to the gentiles in the persons of the Magi; Twelfth-day.
2. an appearance or manifestation, esp. of a deity.
3. a sudden, intuitive perception of or insight into the reality or essential meaning of something, usually initiated by some simple, homely, or commonplace occurrence or experience.

Christmas trees, for most, have been packed away. The lights are down, the presents have been unwrapped, thank-you cards have been written. We've committed to taking off those Christmas pounds, New Year's resolutions have been made, life seems to be heading back to the way it always is, calmer and simpler than those 31 days of December.

Yet, the celebration is not yet over for the Christian church. On January 6th, we celebrate Epiphany, and then for the next four Sundays the Season after Epiphany. Originally, the festival of Epiphany was not as much a celebration of three wise men following a star, as it was a time to celebrate the manifestation of God in Jesus Christ, the baptism of our Lord, and the change of water into wine at the wedding in Cana. Later, Epiphany became a festival day to remember the traveling Magi, as well as to celebrate the in-breaking of God into world struggling with violence and oppression.

So what will Epiphany mean to us? Will we, as if a light has been switched on in a dark room, have to adjust our eyes to see things clearly now that Christ has come? Will Epiphany be for us a time of change, a time to see things with a new kind of clarity? Will the birth of a baby in Bethlehem, our Savior Jesus Christ, cradled in a manger give us insight into the essential meaning of life?

On January 6th we will celebrate the travels of the Magi to a cramped stable in Bethlehem. As we journey through the season of Epiphany, we too, will greet the Christ-child, bringing our own gifts. Will our journey as the people of God change the world, as that of the Magi did thousands of years ago? How will our encounters with God over these next weeks shed light on a world that struggles in darkness?

Grace and Peace,
Pastor Petersen

HISTORICALLY SPEAKING

One hundred years ago this month, Pastor Joshua Oden was finishing his studies at the Lutheran School of Theology in Rock Island. On July 1, 1908, Pastor Oden began his 61-year ministry at Irving Park Lutheran Church.

Pastor Oden performed more than 3,000 weddings during his career, but one of his most famous weddings took place away from our sanctuary. In 1940, Pastor Oden was asked to perform the wedding ceremony for three-time Olympic figure skating champion Sonja Henie and Dan Topping. It was the first of her three marriages.

The following is the Associated Press story, as it appeared in the Syracuse (N.Y.) Herald-Journal on Friday, July 5, 1940. The headline was: "Sonja Henie Becomes Bride Of Topping, Rich Sportsman"

Chicago, July 5 (AP) – Sonja Henie now is wearing a wedding ring alongside the big sparkler she got from Dan Topping a week ago.

The Norwegian-born figure skating and screen star received the love token from the millionaire New York sportsman yesterday at a ceremony attended only by a few friends and the wife's relatives.

The wedding ceremony was read by the Rev. Joshua Oden of the Irving Park Lutheran Church and performed at the Lake Short Drive apartment home of Arthur Wirtz, a business associate of the bride.

Topping, who is the owner of the Brooklyn Dodgers football team, met his bride when she appeared in her ice revue in New York City last winter. The romance came to public notice in March when they took the same boat to Honolulu. They became engaged last week.

Miss Henie wept softly during the wedding ceremony but brushed aside her tears as she received Topping's kiss and said: "I have never been so happy." She wore a black sheer street dress and black turban. The couple kept their honeymoon place a secret.

Gerd Heine, the bride's sister-in-law, was maid of honor while John "Shipwreck" Kelly, professional football player, was best man. Miss Henie's brother, Leif, and mother, Mrs. Selma Henie, also were present.

Miss Henie, who is 27, said she expected to continue her career. The marriage was her first, Topping's third. The 28-year-old bridegroom was divorced last May from Arline Judge, movie actress, whom he married in 1937.

Miss Henie became a Hollywood star in 1937, a year after quitting amateur skating to start a series of

American ice carnival tours. She won the Norwegian figure skating title at 11, and her first Olympic championship at 16. She captured the world's figure skating championship 10 times before turning professional."

Ironically, Sonja Henie died at age 57 on Oct. 12, 1969, aboard a flight to Oslo, Norway. Her death came three weeks after Pastor Oden, 89, died on Sept. 22, 1969.

—Ralph Greenslade

Darling of Ice Weds Millionaire Suitor



AFTER CHICAGO CEREMONY. (AP—Wirephoto). Sonja Henie, internationally famed ice skater and screen actress, clasps hands with Dan Topping, millionaire New York sportsman, after their marriage in Chicago. With them is the Rev. Dr. Joshua Oden, who performed the ceremony.

This is a copy of an Associated Press photo of the Sonja Henie-Dan Topping wedding ceremony that was sent to papers across the country. This photo appeared in the Syracuse (N.Y.) Herald-Journal on Friday, July 5, 1940, with the following caption: "Sonja Henie, internationally famed ice skater and screen actress, clasps hands with Dan Topping, millionaire New York sportsman, after their marriage in Chicago. With them is the Rev. Dr. Joshua Oden, who performed the ceremony."

GREETINGS AND HAPPY HOLIDAYS!

I would like to take a moment to thank the congregation for their generous support and giving towards my service in Nepal this month. Your warm wishes and donations are greatly appreciated; I definitely could not have committed myself for such an extended period of time without your help. I know that this trip will be one of the most challenging experiences of my life, but I'm sure it will also be the most rewarding. I look forward to having great conversations with you when I return!

Thank you!

Britta Schroeter

CELEBRATE THE SEASON

Food, Fun and Fellowship

As many of you know, Irving Park Lutheran Church hosts the Annual Shrove Tuesday Pancake Supper, which is a widely anticipated event for many in our congregation and our community. The constant support makes this supper a very successful means to help fund the Magic Mushroom Summer Program, which will soon enter its 33rd year!

However, in February of 2008, Shrove Tuesday falls on the same day as the Illinois Primary Election. Our gymnasium is contracted to two city precincts to be a polling place, and of course, we encourage all to vote with ease! Therefore, we ask that you mark your calendars now for:

FAT FRIDAY!

Irving Park Lutheran Church's (Pre-Shrove Tuesday) Pancake Supper!

Friday, February 1st, from 5:00 until 7:30 p.m.
IPLC gymnasium, 4057 N. Harding

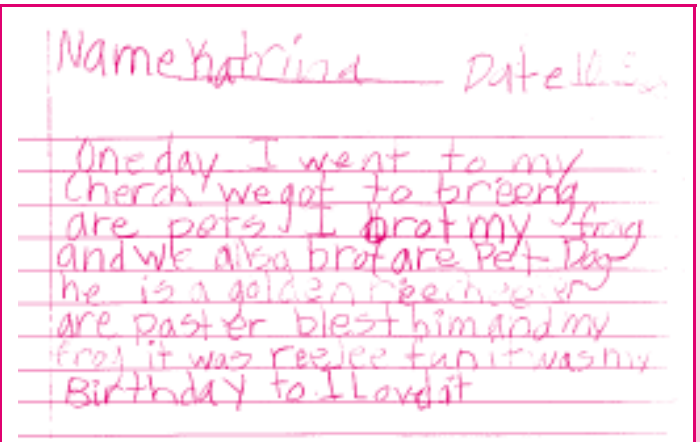
Tickets are \$6.00 for adults and \$4.00 for children twelve years and under, and can be purchased by an IPLC council member, or by calling 773-267-1667, or at the door.

As always, guests may feast on Swedish and regular pancakes served with lingonberries, fresh apple topping or syrup, sausages and beverages. Sweets can also be purchased at the Bake Sale table. While you're eating, you may register your child for the 2008 Magic Mushroom Summer Program, which is scheduled from July 7th through the 31st, 2008.

Shrove Tuesday is celebrated with merriment, self-indulgence, and—in particular—with great quantities of pancakes. Long ago, strict Christian Lenten rules prohibited the eating of all dairy products. So, keen housewives made pancakes to use up their supplies of eggs, milk, butter and other fats. Families ate stacks of them, and pancakes were popular with everyone from all socio-economic classes.

The Magic Mushroom program is a four-week long, summer program for children three years of age through grade six, consisting of instruction in Bible studies, art, music and physical education. Registration begins at the Pancake Supper.

For more information on the Pancake Supper or Magic Mushroom call the church office at **773-267-1667**. We look forward to seeing you on February 1st, and we thank you for your continued support!



ON BEHALF OF WELCA,

a big THANK YOU to all the elves, angels, trolls and stars who baked, cheered, bought, and crafted items for the Annual Christmas Boutique! It was a productive and joyous extravaganza. Once again, WELCA will extend a helping hand to many people, by donating to several charitable organizations!

+ CHRISTIAN SYMBOLS +



CHI RHO

The Chi Rho is an ancient monogram of Christ. The symbol is composed of the first two letters of the Greek word for Christ: XPICTOC (pronounced Christos). There are many variations, but the most common form superimposes the "X" (Chi) on the "P" (Rho). Although it isn't considered to be a cross, the Chi Rho invokes Jesus' crucifixion. The symbol has been in use for more than 1,600 years. Early Christians used the Chi Rho as a sign of their faith, and Constantine the Great placed it on his soldiers' shields.

IRVING PARK LUTHERAN CHURCH ANNUAL MEETING 2007, MINUTES OF OCTOBER 21, 2007

The meeting was called to order by Pastor Petersen who led the the group in an opening prayer. A quorum was established with 26 members signing in. (quorum is 8% of 239 or 20 people). The agenda was approved with the correction of Eleanor Kepp's name rather than Eleanor Barrett running for council. Minutes of the October 2006 and June 2007 meeting were approved.

Elections: A slate of eight names were presented for the eight vacant council positions. There being no nominations from the floor the following persons were voted in by acclamation: Phil Bole, Paul Clausen, Jill Hjelmgren, Karen Lurie and Lynette Schroeter. Elected for a second term are Holly VanEssen, Eleanor Kepp and Noel Nape. Retiring council members were thanked for their service.

David MacKenzie was voted by acclamation to the position of auditor. He joins John Van Essen and Paul Clausen as the 2007-2008 audit team.

Roberta Bole and Gordon Johnson volunteered and were approved by acclamation to serve as IPLC's delegates to the 2008 Synod Assembly.

Organizational Reports were presented for approval. In regards to the report of Pastor, Pastor commented that this has been an incredible year for her and IPLC. She urged us to look beyond the budget figures to see the positive things we are doing. She stated that her first year was spent being an historian and getting to know us and the church. Her second year will be committed to searching for a vision -not just what we have but who we are. Also ahead for the second year is a review of stewardship as individuals and as a church.

A motion was made, seconded and carried to accept the organizational reports.

Presentation and Approval of Budget Treasurer Sue Geisler presented the 2008 budget. She pointed out how effectively we carry out our mission and programs as a church with only 20% of the budget. 80% of the budget goes to salaries and property. She pointed out that we had to borrow from the Endowment fund to meet our financial needs this year. She said there is a need for more people in church in order grow spiritually and financially.

During discussion of the budget the following points were made:

- Debt reduction envelopes are used to cover bills. Those funds do not go into the endowment fund.
- Capital projects, grants and gifts come out of the Endowment Fund

- Should there be a cap on the amount that can be borrowed from the Endowment Fund to meet expenses?
- A cap might cause problems if funds are not available to pay salaries, bills etc
- There may be a need to call congregational meetings to make people aware of the shortfalls.
- Instead of calling it borrowing from the Endowment Fund, transferring funds is a better way of saying it.
- The reported impending hikes in utilities were not taken into account when preparing the budget.
- The spending for 2007 has actually been less than the 2007 budgeted amounts, that reflects a watchful eye.
- IPLC hardly ever passes a balanced budget and yet somehow we make it.
- Not a way to run our personal finances but somehow God is with us.

MOTION: A motion was made, seconded and carried to approve the 2008 budget with the transfer of \$101, 830.19 from the Endowment Fund as needed and that any other transfers from the Endowment Fund would require congregational approval.

Old Irving Park Community Center Council President and Service Team member Sandra Stumme presented the following motion:

MOTION: The IPLC congregation will fund for one year the rent for the Old Irving Park Community Clinic not to exceed \$12,500. The money will come from the Mission Fund.

During discussion it was explained that a retired doctor living in Old Irving contacted the various churches and agencies in the neighborhood with his plan to open a medical clinic for the uninsured. The request went from the Carlson Ministries to the council. The Carlson Ministries may do something else for the clinic but we were asked to pay the rent. The service team yearly donates money to different groups. This year they have decided to donate their funds to just the clinic. Since this one donation exceeds the amount they may disperse with their discretion the service team/ council needed to get congregational approval. We will be giving the money on a monthly basis.

Other congregations are volunteering and the Ministry Alliance is in favor of the clinic. A couple hospitals are donating equipment. The clinic has established a budget and will be seeking grants. However, since grant agencies usually do not want to pay for rent we were asked if we could help in this manner. We will be giving the money on a monthly basis.

The motion was second and approved with one nay vote.

JANUARY 2008

Readings for the Month

- 1 Jeremiah 31:15-22
- 2 Matthew 13:54-58
- 3 Exodus 1:15—2:10
- 4 Hebrews 11:23-28, 32-40
- 5 Psalm 71:1-16
- 6 **Epiphany of Our Lord**
Isaiah 60:1-6, Psalm 72:1-7, 10-14
Ephesians 3:1-12, Matthew 2:1-12
- 7 1 Kings 10:1-13
- 8 1 Kings 10:14-25
- 9 Luke 13:31-35
- 10 Micah 5:2-9
- 11 Ephesians 3:14-21
- 12 Psalm 72:1-19
- 13 **The Baptism of Our Lord**
Isaiah 42:1-9, Psalm 29
Acts 10:34-43, Matthew 3:13-17
- 14 Genesis 35:1-15
- 15 Jeremiah 1:4-10
- 16 Matthew 12:15-21
- 17 Isaiah 51:7-16
- 18 Acts 8:4-13
- 19 Psalm 89:5-37
- 20 **Second Sunday after the Epiphany**
Isaiah 49:1-7, Psalm 40:1-11
1 Corinthians 1:1-9, John 1:29-42
- 21 Exodus 12:1-13, 21-28
- 22 Isaiah 53:1-12
- 23 Matthew 9:14-17
- 24 Isaiah 48:12-21
- 25 Acts 8:26-40
- 26 Psalm 40:6-17
- 27 **Third Sunday after the Epiphany**
Isaiah 9:1-4, Psalm 27:1, 4-9
1 Corinthians 1:10-18, Matthew 4:12-23
- 28 Judges 6:11-24
- 29 Judges 7:12-22
- 30 Luke 1:67-79
- 31 Genesis 49:1-2, 8-13, 21-26

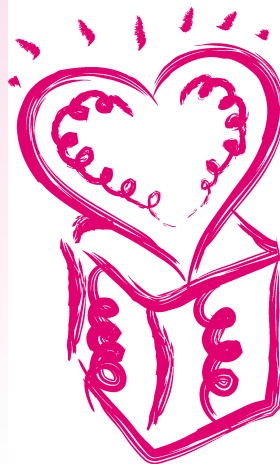
WEDDING ANNIVERSARIES

- Marcella & William Klusack - January 10, 1980
Marie & Lloyd DaMask - January 23, 1954
Sarah & Simeon Stumme - January 24, 1995

BIRTHDAYS

- 1 Sarah Stumme
- 2 Katharine Johnson
- 3 John Johnson
- 4 Scott Propst
- 5 Dan Anderson
Kris Swanson
- 6 Simeon Stumme
- 10 Rich Wielock
- 12 Linda Frederick
- 15 Victoria Swanson
- 16 Heather Smith Grattan
Catherine Tognazzi
- 21 Lloyd DaMask
- 23 Nils Clausen
- 24 Joey Crook
- 26 Eric Hjelmgren
- 27 Loretta Cwiertnia
- 28 Frieda Lee Stevenson
- 29 George Tognazzi

This Busy Day



Today is a gift
From God above
With time for our work
And time for love.

When work pushes hard
And haste wants to shove,
That's just when we need
To share more Love.

—Peggy Ferrell

ADVERTISERS OF THE MONTH

Please support our advertisers. It is through their ads and support of IPLC that our newsletter is printed every month.

Brian R. Langowski
D.D.S.
Practice of General Dentistry
Day-Evening & Sat. Hours Available
New Patients Welcome
4344 N. Keystone 736-3442

City Service
Electric, Inc.
4030 N. Nashville Avenue
Chicago, IL 60634
773-282-7186 Fax: 773-282-7189

Nelson
Funeral Homes
BURIAL AND CREMATION SERVICES
5149 N. ASHLAND AV (AT FOSTER)
CHICAGO • (773) 561-5147
820 TALCOTT ROAD (AT CUMBERLAND)
PARK RIDGE • (847) 823-5122

JANUARY 2008

Sun	Mon	Tue	Wed	Thu	Fri	Sat
		1	2	3	4 7:00 Women's Volleyball 8:00 Alkies Only 9:00 Men's Volleyball	5 10:00 Confirmation, 10:30 Basketball
6*	7 3:00 MAP 7:00 Women's Volleyball	8 3:00 MAP 7:00 Cub Scouts Worship Team Carlson Ministries 8:00 Basketball	9 9:00 Jammin' with Julie 3:00 MAP 4:30 ICCIP 7:00 Girl Scouts, Bells 8:00 Chancel Choir	10 3:00 MAP 7:00 Midweek	11 9:00 Jammin' with Julie 7:00 Boy Scouts 8:00 Alkies Only 9:00 Men's Volleyball	12 10:30 Basketball
13* 6:30 Bible Study	14 3:00 MAP 7:00 Volleyball 7:30 Congregational Council	15 3:00 MAP 7:00 Cub Scouts 8:00 Basketball	16 9:00 Jammin' with Julie 3:00 MAP 4:30 ICCIP 7:00 Girl Scouts, Bells 8:00 Chancel Choir	17 3:00 MAP 6:00 Potluck 7:00 Midweek	18 9:00 Jammin' with Julie 7:00 Boy Scouts 8:00 Alkies Only 9:00 Men's Volleyball	19 10:30 Basketball
20*	21 3:00 MAP 7:00 Volleyball	22 3:00 MAP 7:00 Cub Scouts 8:00 Basketball	23 9:00 Jammin' with Julie 3:00 MAP 4:30 ICCIP 7:00 Girl Scouts, Bells 8:00 Chancel Choir	24 3:00 MAP 7:00 Midweek	25 9:00 Jammin' with Julie 7:00 Boy Scouts 8:00 Alkies Only 9:00 Men's Volleyball	26 10:30 Basketball
27*	28 3:00 MAP 7:00 Volleyball	29 3:00 MAP TEAM NIGHT 7:00 Cub Scouts 8:00 Basketball	30 9:00 Jammin' with Julie 3:00 MAP 4:30 ICCIP 7:00 Girl Scouts, Bells 8:00 Chancel Choir	31 3:00 MAP 6:00 Midweek 7:00 Midweek	Please check weekly bulletins for any schedule changes.	

*SUNDAY SCHEDULE

9:00 am-Chapel, Sunday School, Adult Studies
10:30 am-Traditional Service
11:45 am-Ensemble rehearsal

MID WEEK WORSHIP

Thursdays at 7:00
Christmas Potluck December 13

TIDINGS

JANUARY 2008, VOLUME XXXV, No. 1

Visit our Website: <http://www.iplc.org>

Rev. Brooke Petersen, Pastor
pastorpetersen@iplc.org

IPLC Office
office@iplc.org

SERVICE SCHEDULE

Sunday:
9:00 am Sunday School, Chapel and
Adult Studies
10:30 Holy Communion

Thursday, Midweek Worship
7:00 pm

CONGREGATIONAL COUNCIL

Bruce Anderson
Paul Clausen
David Hall
Jill Hjelmgren
Karen Lurie
Lynette Schroeter
Lee Stein
Holly Van Essen

Phil Bole
Sue Geisler
Elmer Haneberg
Eleanor Kepp
Noel Nape
Bill Sherlock
Sandra Stumme
Darcie Wadycki

COUNCIL PERSON EMERITUS

Lloyd DaMask
Gordon Johnson
Richard Wielock

STAFF

Dawn Benson

Church Secretary/Bookkeeper
dawn@iplc.org

Roger Bingaman

Dir. Of Music/Office Manager/Tidings
Editor roger@iplc.org

Lynette Schroeter

Volunteer Sunday School
Superintendent
gilschro@aol.com

Dwan Buetow

Mid-week Worship Coordinator
dwan@iplc.org

Chris Richard

Director of Ensemble
cnprichard@aol.com

Erin Day

Youth Director, erin@iplc.org

Dawn Benson & Phil Bole

Custodians

